

CPM uses cloud-based photogrammetry platform for measurement, control and monitoring of infrastructure construction work in Tel Aviv neighborhood

Project management:



Commissioned by



The project

Project type: Infrastructure development in Eshkol neighborhood (Sde Dov), Tel Aviv

Neighborhood area: 0.34 square km

Number of flights: 24

Frequency of flights: Twice a month

Results

- Significant shortening of schedules due to fast and accurate measurements
- Improved execution quality
- Streamlined project management
- Financial savings in expenses incurred for site surveyors and reduced errors in quantity calculations and measurements from contractors

Added value

- Consistent documentation across the entire project lifecycle
- Ability to visually compare different deadlines and measure progress throughout the project duration
- Increased transparency in status meetings with all stakeholders
- Improved decision-making based on accurate data

Introduction

The infrastructure sector is often characterized by use of traditional methods and little technology. However, in recent years significant changes have occurred in this sector as more and more project management companies and contractors are understanding the added value of using technology in their daily workloads. This increasing use of technology is leading to shorter timetables, cost saving and better quality across project lifecycles.

An example of such a project management company is [CPM Group](#), which is currently using DatuBIM in multiple projects that it manages. CPM is working as the project management company for the Sde Dov (Eshkol) neighborhood, which is being built as part of an agreement between the Tel Aviv Municipality and the Israel Land Authority.

About Israel Land Authority and CPM Group

[Israel Land Authority \(ILA\)](#) manages most of the land in Israel. As part of this role, ILA oversees all development work on land it owns that is in the jurisdiction of local authorities. In the case of the Sde Dov project, all aspects of project management for the land development are being done by CPM on behalf of ILA.

CPM Group is a privately-held company that was established in 1991. The company holds a wealth of experience in project and mega-project management in the residential, commercial and office sectors, amounting to tens of billions of shekels.





Project background

The Eshkol neighborhood is located in a prime location in Tel Aviv. It is the first cornerstone of a large and complex mega-project – the Sde Dov quarter. Prior to the building of this new neighborhood, the Sde Dov airport was located on this land.

As part of an agreement between ILA, the Ministry of Defense and the Tel Aviv Municipality, Sde Dov airport was vacated and plans for a new neighborhood to be built in its place were created. A total number of 16,000 units will be built in the Sde Dov quarter, out of which 4,176 will be residential and the remainder will be used for commercial and other purposes.



Main benefits of using the DatuBIM platform

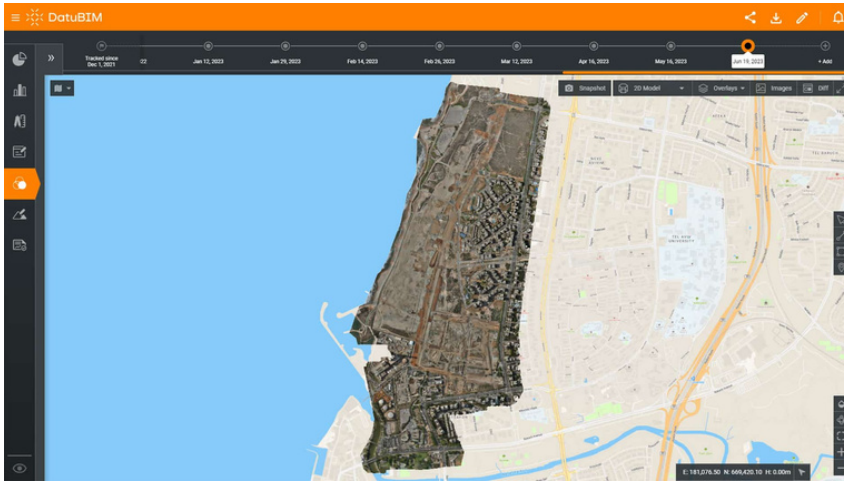
- CPM uses DatuBIM, a cloud-native SaaS photogrammetry and drone mapping platform to digitally and automatically measure, track and monitor projects across their lifecycle.
- The platform uses image processing technology and a unique photogrammetry engine to analyze drone images of the work site and produce highly accurate 3D maps and engineering reports for ongoing project management and monitoring. It has been approved for use by the [Survey of Israel](#) with the same level of accuracy as a certified surveyor.
- As part of its focus on championing innovation and the use of advanced technologies, CPM has been using DatuBIM since 2021 in different infrastructure development projects throughout Israel.
- The company uses the platform from the planning stage and throughout the project execution to monitor the progress of all infrastructure work, measure stockpiles, verify and approve contractor billing, and coordinate between all project stakeholders.



“DatuBIM allows me to track my work conveniently and quickly from design to completion. I believe that it’s only a matter of time before this type of technology will be used for all infrastructure and construction projects in Israel, and all project owners, managers and supervisors will use digital software to monitor progress and get access to real site data.”

David Haymes, engineer and Project Manager at CPM.



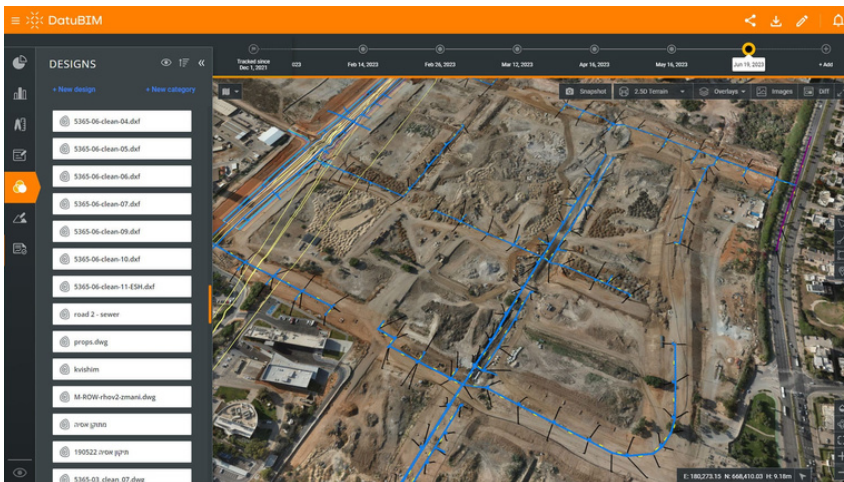


Looking to
digitize your
construction
site?

Get a demo **now**.

Additional benefits

- Information management and transparency between stakeholders, especially in status meetings with owner and contractors
- Higher accuracy in earthwork calculations and when verifying contractor billing
- Grid elevation measurements and comparison with measurements provided by contractors for verification purposes
- Ongoing quality assurance and control through comparison of execution to design and planning
- Deviations can be fixed in a timely manner



Results

CPM has realized the added value of using DatuBIM for both the company and for the owner of projects and uses the platform in multiple projects that it is managing.

The software helps to save time, reduce schedules, save on execution costs, and improve quality, as well as allow project managers and supervisors to overcome the challenges inherent to managing, planning and executing infrastructure projects