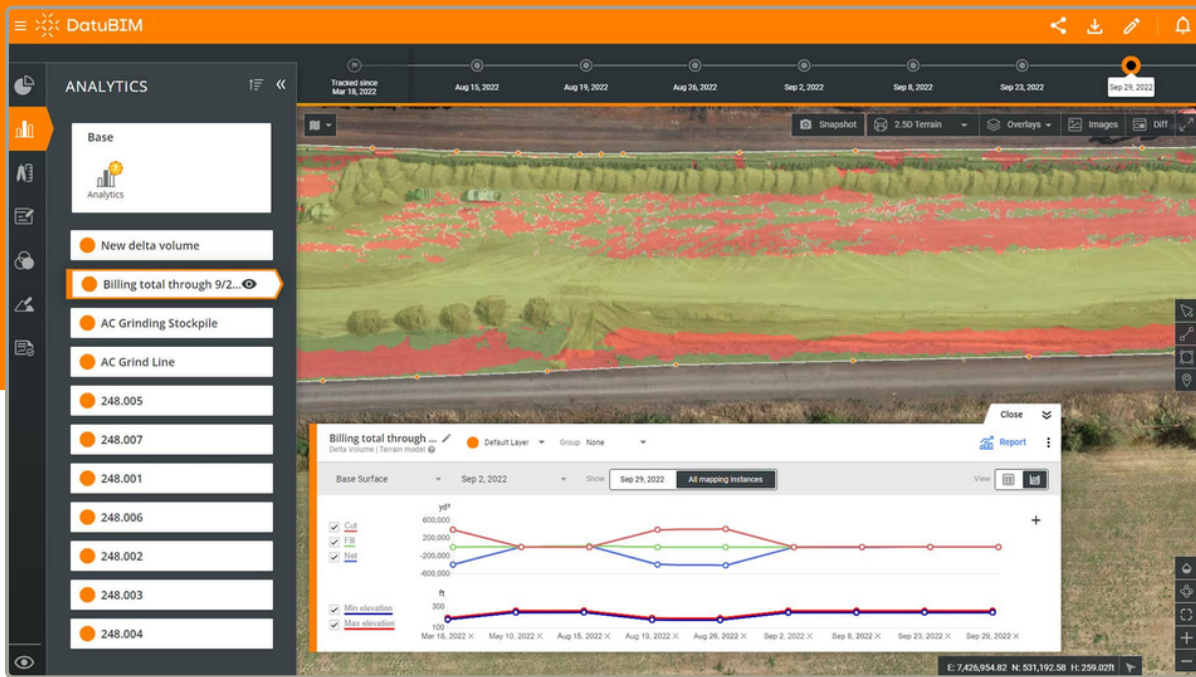
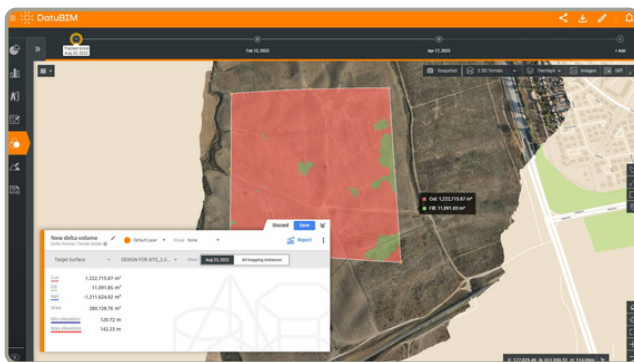


Use case

Get the data you need for accurate billing



Simplify billing through accurate verification and compensation

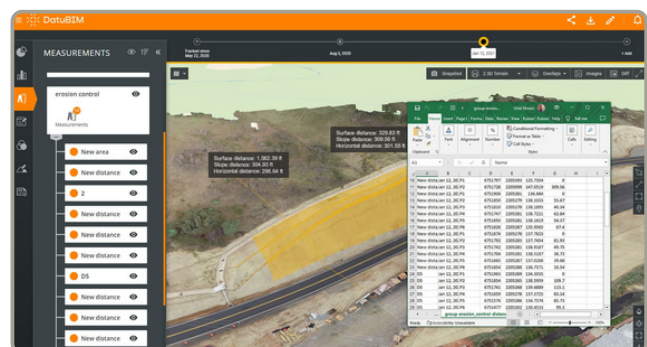


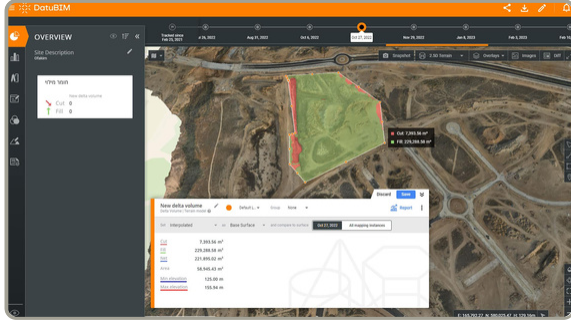
Efficiently manage and bill for change orders and rework

Closely monitor and accurately charge for any modifications made to the design or resulting from site conditions – even after the work has been completed. Easily check progress and visualize the completed work to ensure precise calculations and reimbursement. Quickly verify payment requests to prevent any potential discrepancies and ensure fair compensation for all work involved. By minimizing disputes, you can maintain a harmonious working environment and foster trust amongst all stakeholders.

Streamline operations with automated processes

Say goodbye to repetitive manual tasks and welcome efficiency into your workflows. With DatuBIM, you can eliminate costly and time-consuming manual field surveying – liberating your team from labor-intensive monthly billing processes. Stay on top of construction teams and their progress with up-to-date reporting and volume measurements. Embrace automated analytics to ensure accurate reporting and invoicing, swift verification of sub-contractor payments, and seamless sign-off on monthly billing.





Achieve greater confidence in your earthwork calculations and contractor payments

Take control of earthwork accuracy and streamline contractor billing processes. Effortlessly measure stockpiles with precision and make easy comparisons with historical data or final designs to assess remaining work. Ensure transparency by notifying all sub-contractors that all measurements and billing will be verified. With this proactive approach, deter false claims and foster a more trustworthy and efficient project environment.

Example

Background

- Infrastructure construction projects usually involve a complex supply chain and multiple stakeholders
- Makes it extremely challenging to keep track of payments made to subcontractors and even harder to verify that the amounts requested are accurate
- In the case of a new highway city-bypass construction project that runs over existing utility infrastructure, a general contractor received an invoice from a sub-contractor for an unplanned excavation
- The volume that was billed appeared suspicious to the general contractor, who needed a way to verify this before rejecting the charge

Solution

- General contractor uploaded the sub-contractor's surface to DatuBIM showing the calculated surface with the wrong elevation
- DatuBIM gave the owner the accurate information and assurance to dispute the additional charge from the subcontractor

Results

- General contractor was able to check volume calculations and dispute charge
- Rejected subcontractor's request for additional payment for 2,000 cubic meters of earthwork excavations
- General contractor saved 50K USD



\$50K
COST SAVINGS