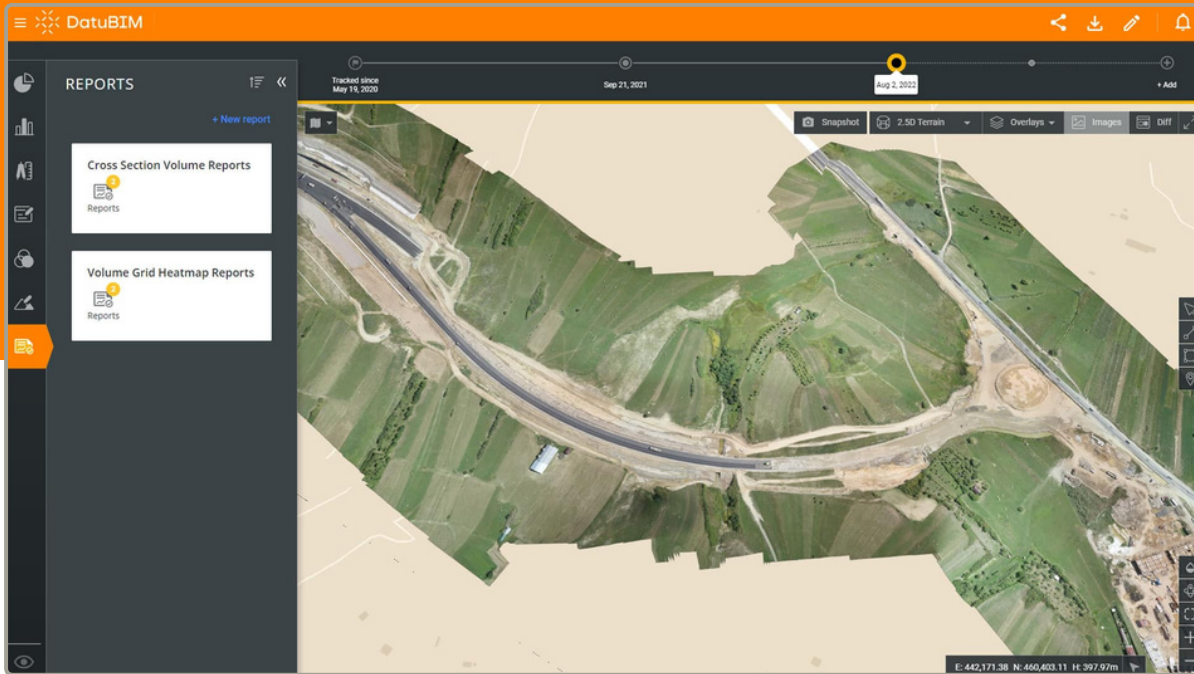
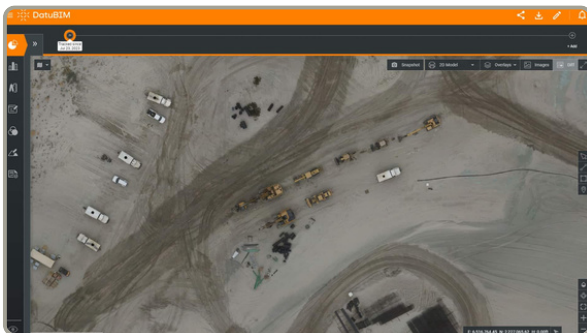


Use case

Take the guesswork out of your earthworks



Closely monitor earthwork progress and execution metrics

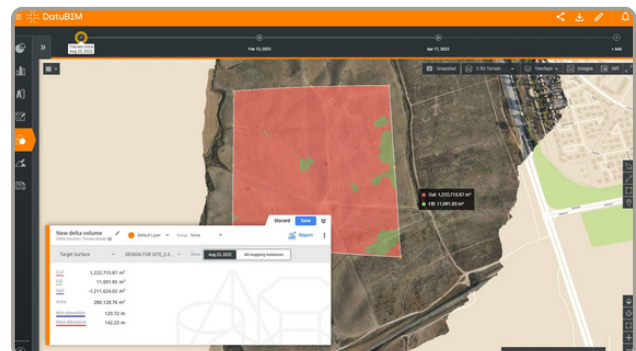


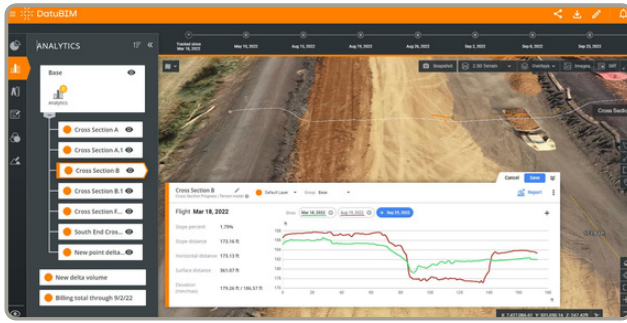
Monitor and track earthworks

Easily monitor earthwork with automatic volume calculations, trace changes with each consecutive as-built digital twin and compare design surface to the as-built, and follow up on cut-and-fills over time and in different formats. Track site progress and accelerate delivery of each phase.

Improve visibility and remotely manage construction sites

Oversee your construction site with meaningful project execution metrics extracted from field data. Utilize consecutive as-built digital twins generated from drone imagery to control site progress based on real-time data and fast-track decisions based on DatuBIM's insights and reports.





Simplify and verify billing

Make contractor billing processes more efficient through precise measurement of stockpiles and easy comparison with historical data and final designs. Make sure you and your subcontractors are on the same page by informing them all measurements and billing will be verified. Deter suppliers from making false claims and create a more transparent environment which builds trust.

Example

Background

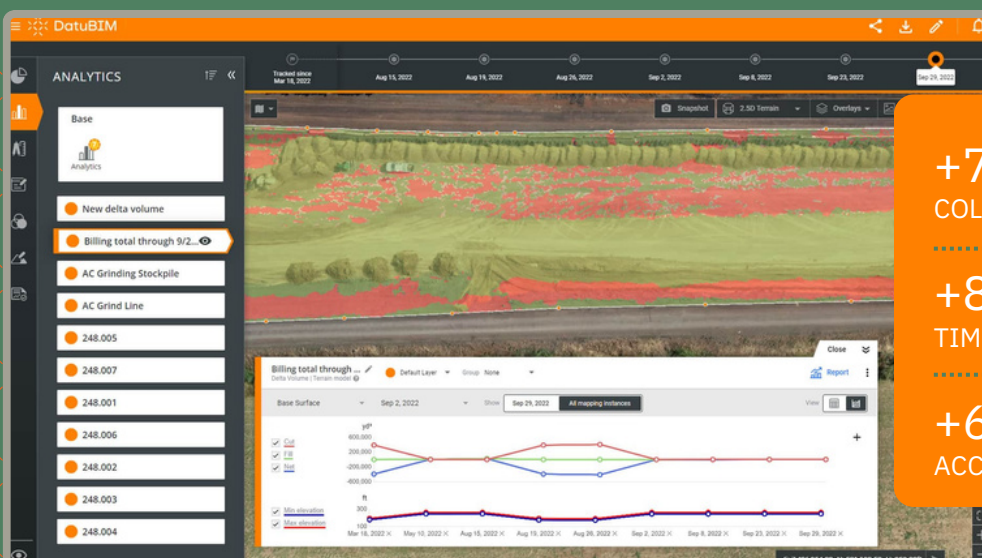
- An Oregon-based earthmoving enterprise needed to accurately estimate the amount of earth to be extracted for a storm retention system and pond
- After winning the bid, the team had to track progress and measure the amount of material actually extracted and removed in order to accurately bill the project owner
- Prior to using DatuBIM, the team often had to drive hundreds of miles every week to visit worksites, carry out foot topos of the terrain, calculate stockpile volumes, and check progress, which was time-consuming and posed physical and safety risks

Solution

- DatuBIM was used by the project supervisor and project managers to create regular and accurate site surveys to easily track and quantify earthworks movements
- Instead of having to track and measure approximately 15 dump trucks that haul material out every day, all of this material could be tracked automatically and remotely
- This was especially useful when the need arose to accurately measure the delta between the amount of earthwork estimated in the bid and the actual amount of earthwork required for the project

Added value

- Using the DatuBIM billing report feature, the contractor could easily measure the additional amount of earth that needed to be extracted and share this with the project's owner for billing purposes
- By providing the owner with this information, disputes over the amount could also be avoided



+70%
COLLABORATION

+80%
TIME SAVINGS

+60%
ACCURACY OF ESTIMATIONS