

Release Notes

DatuFly™ Professional

Version 1.8.0

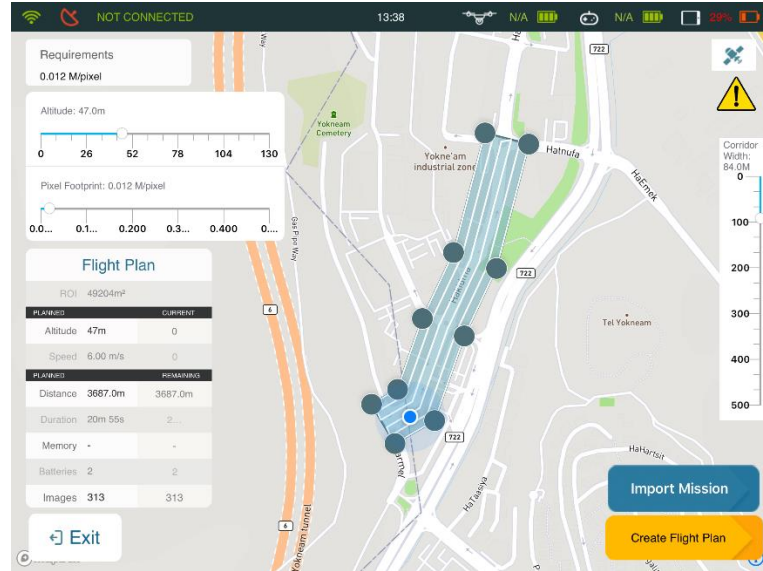
March 2019

Datumate Construction Data Analytics

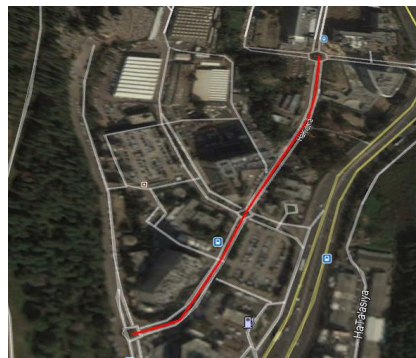
All rights reserved. No part of this document may be reproduced or transmitted in any form or by any means, electronic, mechanical, photocopying, recording, or otherwise, without prior written permission of Datumate Ltd.

DatuFly™ Version 1.8.0 IOS application – March, 2019

1. **Support Corridor Mission** – Added support for defining and flying a corridor mission where one can define a center path using several points and a width. This is Ideal for roads and railways.



2. **Support import of KMZ files for Corridor missions** – Corridor missions can be defined on google maps and imported to DatuFly. This makes planning easier and more accurate.



3. **Simplified Mission Types** – 3 clear mission types are now available.

i

Info

Name (Required)

Product

Grid – Vertical

Oblique

Corridor

Area

Rural

Urban

DatuFly™ Version 1.7.7 IOS application – November, 2018

1. **Support import of KMZ files for Grid missions** – missions can now be defined on google maps and imported to DatuFly. This makes planning easier and more accurate.



DatuFly™ Version 1.7.2 IOS application - July, 2018

1. **Support DJI Phantom 4 Pro V2 drone** – Added support for Phantom 4 Pro V2 drone which adds more stability to image taking.
2. **Support for Inspire II Drone** – Added support for Inspire II drone using X4S and X5S cameras.

DatuFly™ Version 1.2.0 IOS application - January, 2017

1. **Support DJI Phantom 4 Pro drone** – Added support for Phantom 4 Pro drone which has a 20MP camera and a global shutter allowing clear photography while drone in moving, hence taking more images per battery.
2. **Support DJI most recent firmware** – This includes Phantom 3 Pro, Phantom 4, Inspire 1 Pro, and M600.

DatuFly™ Version 1.1.1 IOS application - December, 2016

1. **Support DJI Inspire 1 drone** – Added support for Inspire 1 drone with the X5 and X3 cameras.
2. **Support DJI M600 drone** – Added support for M600 drone with the X5 camera.
3. **Speed control for vertical missions** – Control the drone speed when taking vertical images. This includes the option of taking images when the drone is hovering.
4. **Automatic takeoff and landing is now optional** – Application is to manual takeoff and landing by default for safety purposes. The operator will need to turn off the manual takeoff and landing option to allow for automatic takeoff and landing. With manual takeoff and landing option, the operator will

be asked to manually elevate the drone to a certain height and then start the automatic mission.

When the mission is completed the operator will be asked to manually bring the drone back.

5. **More flexible control of mission altitude** – The operator can flexibly set the mission altitude for both oblique and vertical missions.
6. **Control the camera angle in oblique missions** – The operator has the option to change the angle in oblique mission.
7. **Chinese localization** – The application now supports Chinese language.